



1105-1107 Tennessee Street | San Francisco | Dogpatch

UNIQUE ★ HOMES

1107 Tennessee Street | San Francisco | Dogpatch

1107 Tennessee Two Bedroom One Bath (Upper Owner's Flat)

Living room Dining Room Open Floor Plan*

Original 1900 Fireplace Mantel flanked by Custom Cabinetry*

Hi Ceilings, large moldings and Bay Window*

Two Large Bedrooms*

Custom inlaid hardwood floors throughout*

Remodeled Eat-in Kitchen, Skylight*

New appliances, New Lighting*

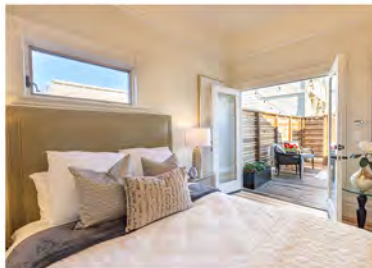
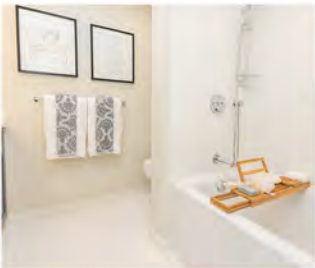
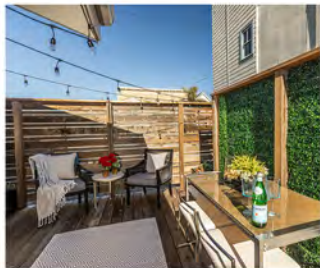
Remodeled Bathroom*

Large Laundry Room with new washer/dryer*

Large private deck lighted*

Garage Parking, storage*

Full floor Attic potential expansion (see floorplan)*



1105 Tennessee Street | San Francisco | Dogpatch



1105 Tennessee Two Bedroom One Bath (Lower Flat)

- *Living room High Ceilings and Bay Window
- *Two Large Bedrooms
- *Refinished Wood Floors throughout
- *Original gas Fireplace and Vintage Mantel
- *Remodeled Eat-in Kitchen, new ceramic floors
- *Walk-in Pantry, new appliances, new lighting
- *Remodeled Bathroom
- *Large Laundry Room with W/D hookups
- *Private deck lighted, shared lower patio with fire pit
- *Garage parking, storage
- *Potential expansion connecting to lower workshop (NC-2 or ADU)

Transportation: Dogpatch has some of the best transportation in SF! Walk one block West and you will be at the Muni Light Rail T Line that will take you straight to the Chase Center/UCSF Mission Bay, Oracle Park, Embarcadero, and Multiple BART stations. Walk two blocks the East and you'll arrive at the 22nd St CalTrain station that will go all throughout the South Bay ending in San Jose.

Visit Us: www.1105-1107tennessee.com

1105-1107 TENNESSEE STREET | SAN FRANCISCO, CA 94107

Estimated Square Footages

- #1105 Tennessee: 1,160 SQ FT
- #1107 Tennessee: 1,280 SQ FT
- 2,440 SQ FT
- Attic: 570 SQ FT
- Garage: 455 SQ FT
- Workshop/Storage: 625 SQ FT
- Decks: 320 SQ FT
- 1,970 SQ FT
- Total Spaces
Square Footage: 4,410 SQ FT



FIRST FLOOR
#1105: 1,160 SQ FT
#1107: 50 SQ FT



SECOND FLOOR
#1107: 1,280 SQ FT



ATTIC LEVEL
#1107: 570 SQ FT



LOWER LEVEL
Garage: 455 SQ FT Workshop/Storage: 625 SQ FT

Floor plan visuals
www.floorplans.com
415.670.9265

All measurements are approximate.
While deemed reliable, no information
on these floor plans should be relied
upon without independent verification.

UNIQUE HOMES

Eladia Laines
eladia@uniquehomes.net
415-716-6677
DRE#00457750

Michael Leddy
michael@uniquehomes.net
415-328-4171
DRE#02012902

Visit Us:
www.1105-1107tennessee.com

@ www.instagram.com/jewelofdogpatch

Offered At
\$2,995,000

Disclaimer: The information contained herein has been provided by various sources which may include the seller, public records, the developer, multiple listing service, or others. Prospective buyers are advised to conduct their own investigation of the property and the information contained herein, utilizing licensed professionals where appropriate before purchasing this property. Equal Housing Opportunity.

Photography, Videography & Marketing by:
www.studio7teen.com